

Stellar[®] TMAX[™] 30K Mechanics Service Body

For questions or to place an order, contact
HAWKEYE TRUCK EQUIPMENT
515-289-1755 or 1-800-622-8223



GUIDE TO FEATURES AND BENEFITS

Designed to serve municipal markets, contractors, rental houses, light equipment dealers and others needing a service crane that lifts 5,000 pounds or less. The Stellar[®] TMAX[™] 30K weighs nearly 1000-pounds less than its heavy-duty counter part, the TMAX[™] 1.



Our People. Our Products.

STELLAR® TMAX™ 30K MECHANICS SERVICE BODY



Complete undercoating with minimum of 3 mils of petroleum base material provides extra protection from corrosion and road debris

250 lb capacity adjustable divider shelves made of spangled galvanized steel

• Rugged 14 gauge two sided A 40 galvaneal steel body shell

• Bodies are finished with two part polyurethane enamel

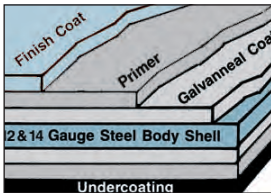
3 Point compression latches positively compress compartment weather strip for weather tightness while allowing easy access



• Every Stellar mechanic service body features our torq isolator crane support design and isolates the crane compartment from the rest of the side pack. Lifting stresses are transferred to the stabilizers and box type subframe not the compartment doors

Stainless steel billet style hinge has hidden fasteners and a rugged 5/16" stainless steel rod. All combined to stand up to years of heavy use

• For reduced truck weight and added corrosion protection the doors are made of 5000 series aluminum and feature a two panel design with a mechanically and chemically bonded internal hat channel to offer ultimate strength and greater resistance to bending



Complete undercoating with minimum of 3 mils of petroleum base material provides extra protection from corrosion and road debris



Double spring over center door closures on all vertical doors keeps door in positive open or closed position



250 lb capacity adjustable divider shelves made of spangled galvanized steel



12 gauge double panel tailgate with hinged arm brackets to provide a stout working surface



Encased in a durable nylon braided loom the standard electrical wiring harness used by Stellar covers all functions and features the use of weather tight connectors

The TMAX 30K is designed to accept a 30,000 foot-pound rated service crane or smaller (The Stellar® 5521 crane or smaller), the TMAX 30K features the Stellar® Torq-Isolator torsion box understructure and crane compartment which isolates the cranes lifting forces into the stabilizers and chassis frame, not into the storage compartments. The body side compartments are constructed of 14-ga. galvaneal steel, with double-panel aluminum doors with a bonded internal hat channel for ultimate strength while still reducing overall weight. It uses stainless steel billet style hinges, 3-point stainless steel compression latches, and double spring over center door closures to keep door in a positive open or closed position. Each body is completely undercoated to protect from corrosion. All Stellar® bodies are painted with a two-part polyurethane enamel paint for added protection and visual appeal.

General Body Specs

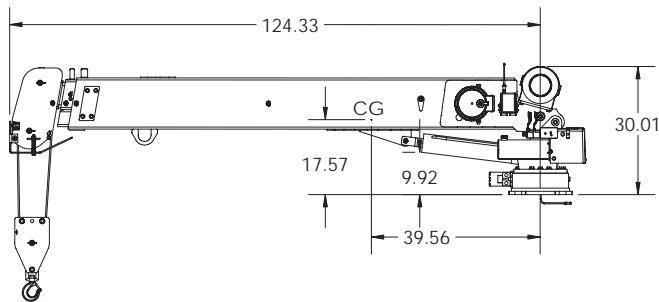
Model	GVWR	Cab to Axle	Length	Height	Compartment Depth	Floor Width
TMAX™ 30K	10,500 - 19,500	60" - 84"	9' to 11'	44" to 60"	22"	50"

Available Cranes

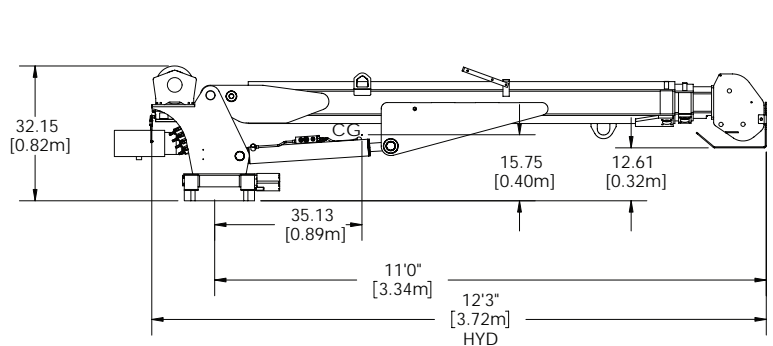
Model	Crane Rating	Boom Length*	Max Reach*	Lifting Capacities	Power Supply
EC3200	11,500 ft- bs (1 59 ton m)	7' (2 13 m)	15' (4 57 m)	3,200 bs @ 3' (1 451 Kg @ 9 m) 640 bs @ 15' (260 Kg @ 4 6 m)	12 vo t power 2.0 gpm @ 2600 ps
EC4000 (16' option)	16,000 ft- bs (2 21 tm)	8' (2 44 m)	16' (4 88 m)	4000 bs @ 4' (1 814 Kg @ 1 22 m) 935 bs @ 16' (420 Kg @ 4 88 m)	12 vo t power 2.0 gpm @ 2300 ps
EC4000 (20' option)	16,000 ft- bs (2 21 tm)	10' (3 05 m)	20' (6 10 m)	4000 bs @ 4' (1 814 Kg @ 1 22 m) 800 bs @ 20' (363 Kg @ 6 1 m)	12 vo t power 2.0 gpm @ 2300 ps
EC5000	25,000 ft- bs (3 46 tm)	10' (3 05 m)	20' (6 10 m)	5000 bs @ 5' (2 268 Kg @ 1 5 m) 1250 bs @ 20' (565 Kg @ 6 1 m)	12 vo t power 2.0 gpm @ 2900 ps
3315	11,500 ft- bs (1 59 ton m)	7' (2 13 m)	15' (4 57 m)	3,200 bs @ 3' 7" (1 451 Kg @ 1 1 m) 765 bs @ 15' (345 Kg @ 4 6 m)	PTO 3 0 gpm @ 2600 psi 12 vo t power E/H (Optional)
4421	16,000 ft- bs (2 23 ton m)	11' (3 35m)	21' (6 40 m)	4,000 bs @ 4' (1 814 kg @ 1 22 m) 760 bs @ 21' (345 kg @ 6 40 m)	PTO 3 0 gpm @ 2600 psi 12 vo t power E/H (Optional)
5521	29,500 ft- bs (4 1 ton m)	11' (3 35 m)	21' (6 40 m)	5,000 bs @ 5' 10" (2 268 kg @ 1 78 m) 1,400 bs @ 21' (635 kg @ 6 40 m)	PTO 8 gpm @ 2500 psi

CDT™ Equipped

EC5000 Telescopic Crane Dimensions



5521 Telescopic Crane Dimensions



- Weighs 1,000 lbs less than TMAX™ 1!
- Complete turnkey packages available
 - Choose from steel and aluminum drawer systems
 - Truck mounted air compressors



Your local distributor:

For questions or to place an order, contact
HAWKEYE TRUCK EQUIPMENT
515-289-1755 or 1-800-622-8223



Our People. Our Products.