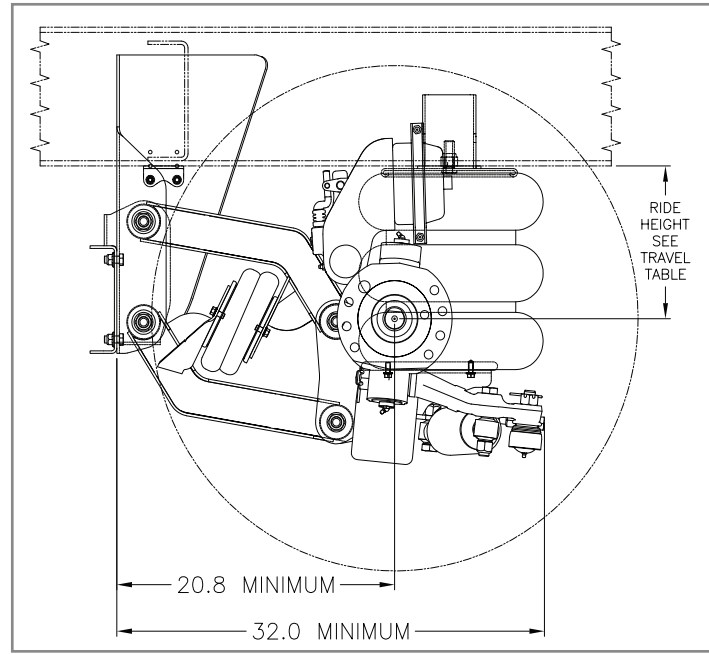


# Compact Mounting Envelope



**TRAVEL TABLE 233 LM**

RIDE HEIGHT	NO SPACER		1" SPACER		2" SPACER	
	UP	DOWN	UP	DOWN	UP	DOWN
7.00	6.0	7.0	—	—	—	—
7.50	6.5	6.5	—	—	—	—
8.00	7.0	6.0	6.0	7.0	—	—
8.50	7.5	5.5	6.5	6.5	—	—
9.00	8.0	5.0	7.0	6.0	6.0	7.0
9.50	8.5	4.5	7.5	5.5	6.5	6.5
10.00	9.0	4.0	8.0	5.0	7.0	6.0
10.50	9.5	3.5	8.5	4.5	7.5	5.5
11.00	10.0	3.0	9.0	4.0	8.0	5.0
11.50	—	—	9.5	3.5	8.5	4.5
12.00	—	—	10.0	3.0	9.0	4.0
12.50	—	—	—	—	9.5	3.5
13.00	—	—	—	—	10.0	3.0

**TRAVEL TABLE 233 MM**

RIDE HEIGHT	NO SPACER		1" SPACER		2" SPACER	
	UP	DOWN	UP	DOWN	UP	DOWN
10.00	6.0	7.0	—	—	—	—
10.50	6.5	6.5	—	—	—	—
11.00	7.0	6.0	6.0	7.0	—	—
11.50	7.5	5.5	6.5	6.5	—	—
12.00	8.0	5.0	7.0	6.0	6.0	7.0
12.50	8.5	4.5	7.5	5.5	6.5	6.5
13.00	9.0	4.0	8.0	5.0	7.0	6.0
13.50	9.5	3.5	8.5	4.5	7.5	5.5
14.00	10.0	3.0	9.0	4.0	8.0	5.0
14.50	—	—	9.5	3.5	8.5	4.5
15.00	—	—	10.0	3.0	9.0	4.0
15.50	—	—	—	—	9.5	3.5
16.00	—	—	—	—	10.0	3.0

**TRAVEL TABLE 233 HM**

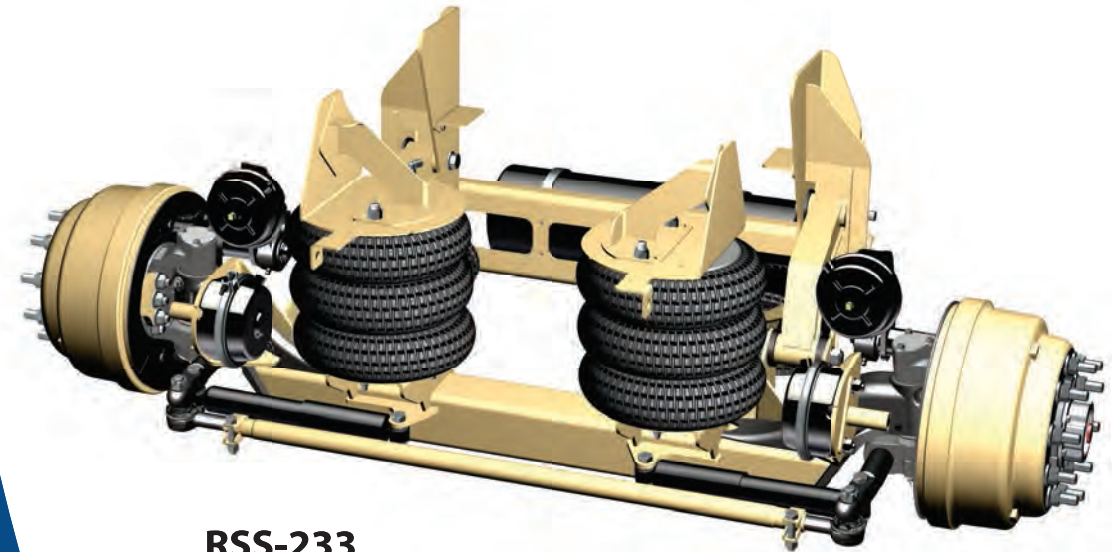
RIDE HEIGHT	NO SPACER		1" SPACER		2" SPACER	
	UP	DOWN	UP	DOWN	UP	DOWN
12.00	6.0	7.0	—	—	—	—
12.50	6.5	6.5	—	—	—	—
13.00	7.0	6.0	6.0	7.0	—	—
13.50	7.5	5.5	6.5	6.5	—	—
14.00	8.0	5.0	7.0	6.0	6.0	7.0
14.50	8.5	4.5	7.5	5.5	6.5	6.5
15.00	9.0	4.0	8.0	5.0	7.0	6.0
15.50	9.5	3.5	8.5	4.5	7.5	5.5
16.00	10.0	3.0	9.0	4.0	8.0	5.0
16.50	—	—	9.5	3.5	8.5	4.5
17.00	—	—	10.0	3.0	9.0	4.0
17.50	—	—	—	—	9.5	3.5
18.00	—	—	—	—	10.0	3.0

**RIDEWELL  
SUSPENSIONS**

# RSS-233 20K *Truck*

## Self-Steering Auxiliary Axle Suspension

*A Lightweight Suspension Without Sacrificing Durability*



**RSS-233**  
20,000 lb Capacity

*12.5" total travel, maximum of 9.5" lift*

*26 degree wheel cut*

*8"-15" ride height range*

*Best in class mounting envelope*

*Kaiser king pin option*

*Suspension ships fully assembled*

*Offset Control arms for improved lateral stability*

*Industry standard tie rod*

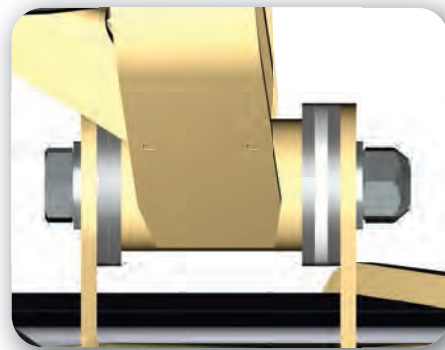
*Forged, one-piece, steer knuckles*



For questions or to place an order, contact  
HAWKEYE TRUCK EQUIPMENT  
515-289-1755 or 1-800-622-8223



# RSS-233 20K Auxiliary Steerable Lift Axle



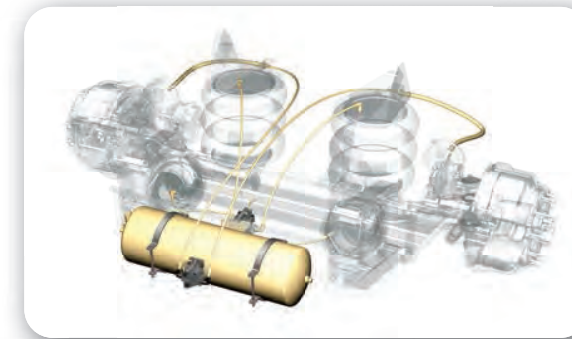
## Adjustable Frame Width

Adjustable to the following frame widths:

- 33.5"
- 34.0"
- 34.5"
- 35.0"

## Pre-Plumbed Air Tank

This option simplifies and decreases installation time.



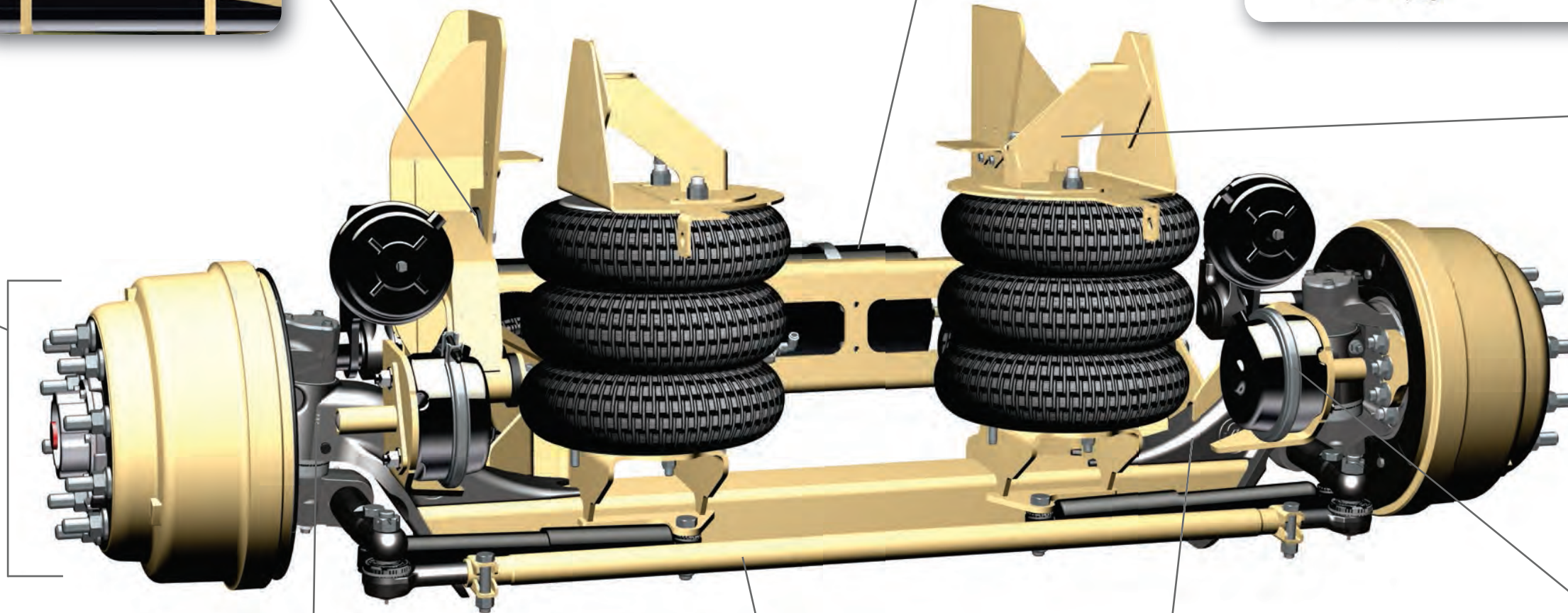
## Steer Knuckles

Forged one-piece steer knuckles. All wheel end parts are industry standard for simple replacement.



## Standard Air Spring Mount

For applications without a cross brace above the air spring. Works with or without a spacer kit. Adjustable from .25" - 1.25"

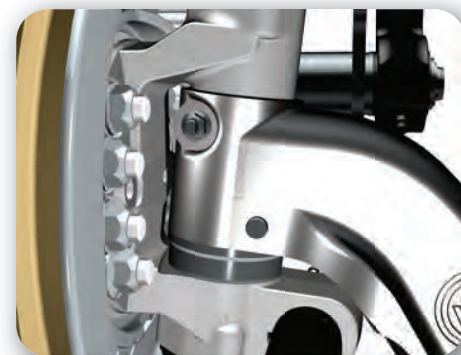


## Fully Cast Axle Ends

This durable design adds strength to the critical axle transition area.

## Steer Locks

Unique design positively locks on both wheel ends in the straight position. Can be activated at any wheel angle position.

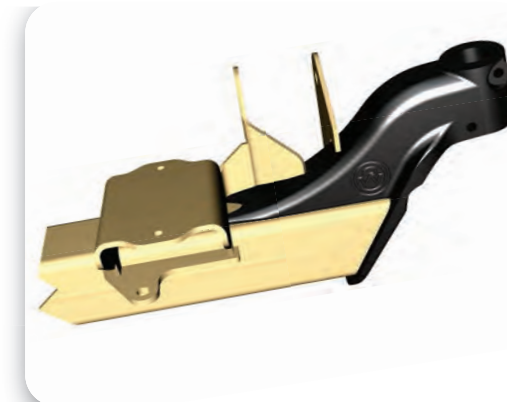


## Dual Draw Key King Pin Design

This design fully captures the king pin within the axle end for longer service life and less down time.

## Industry Standard Tie Rod

This traditional tie rod tube, keeps wheel ends in alignment, extending tire life.



For questions or to place an order, contact  
**HAWKEYE TRUCK EQUIPMENT**  
515-289-1755 or 1-800-622-8223